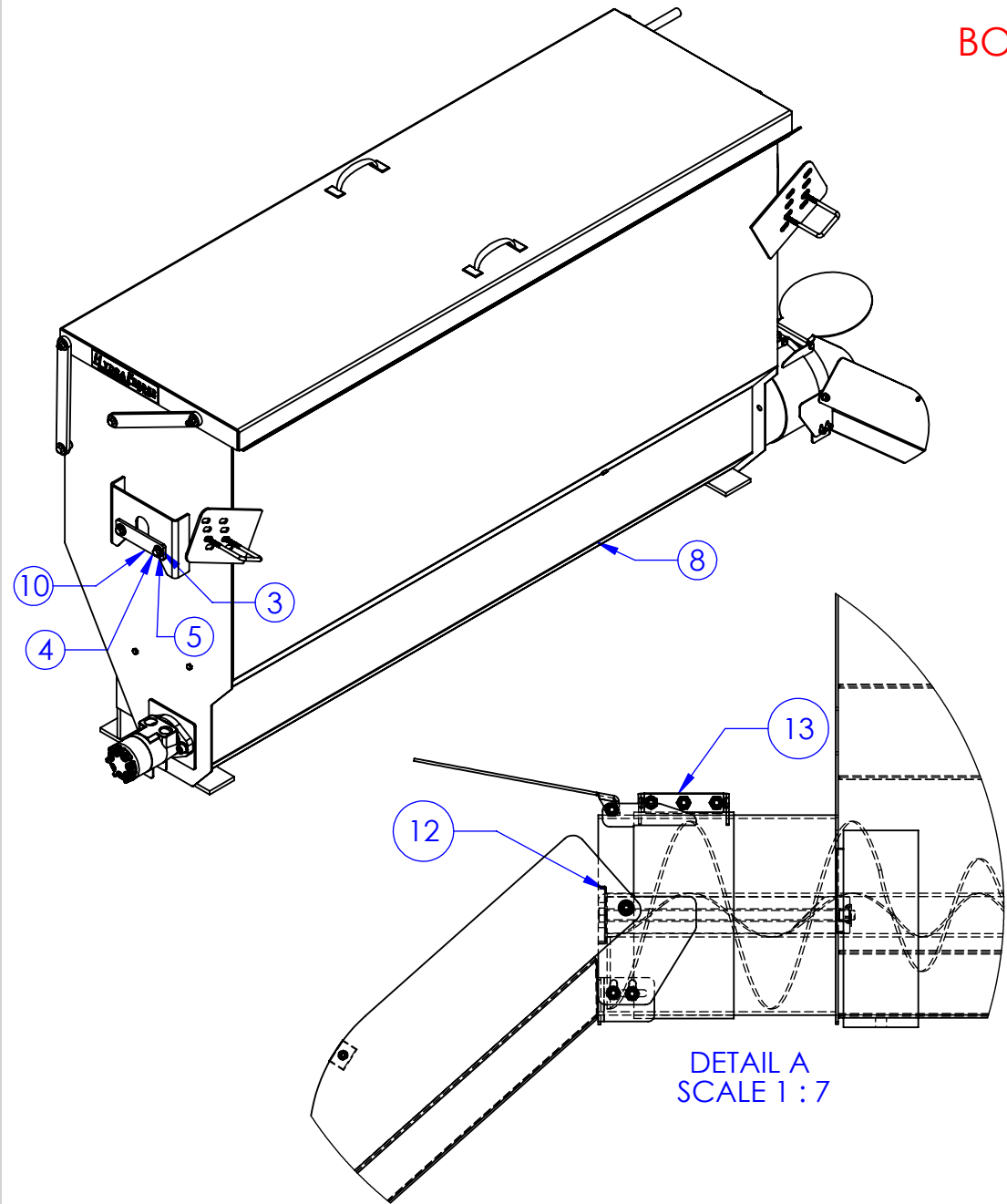
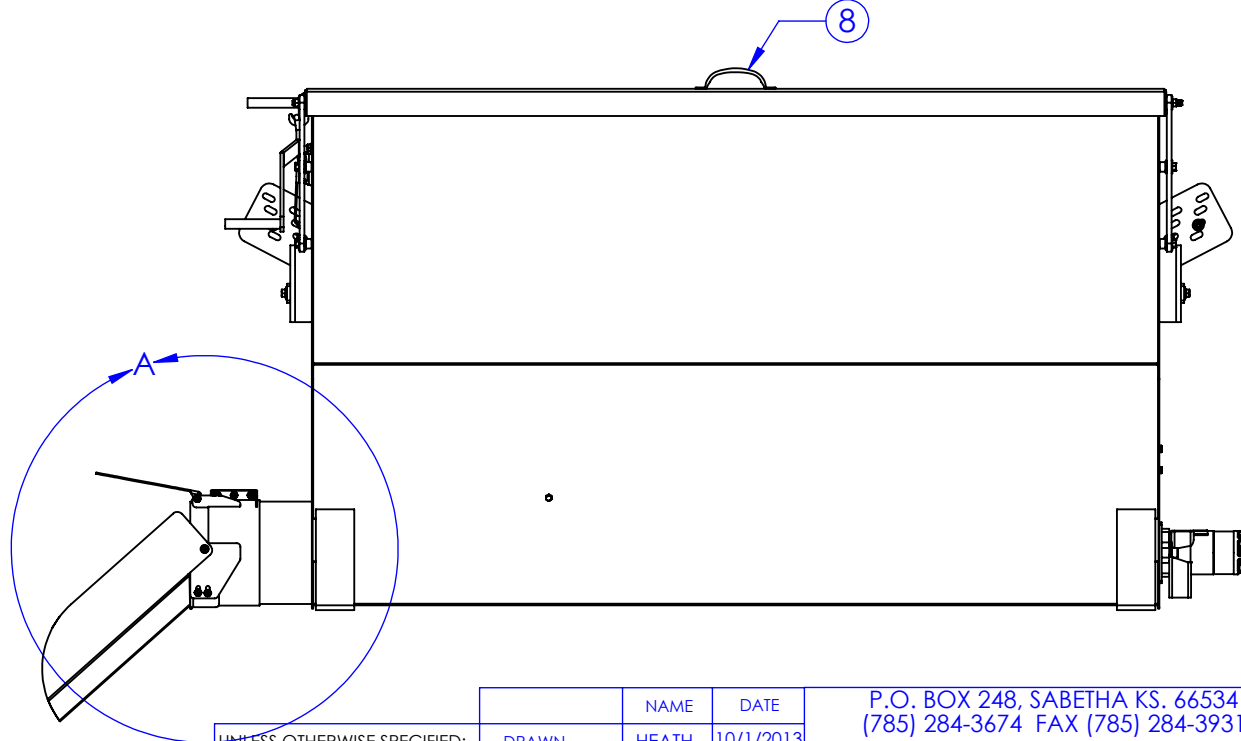
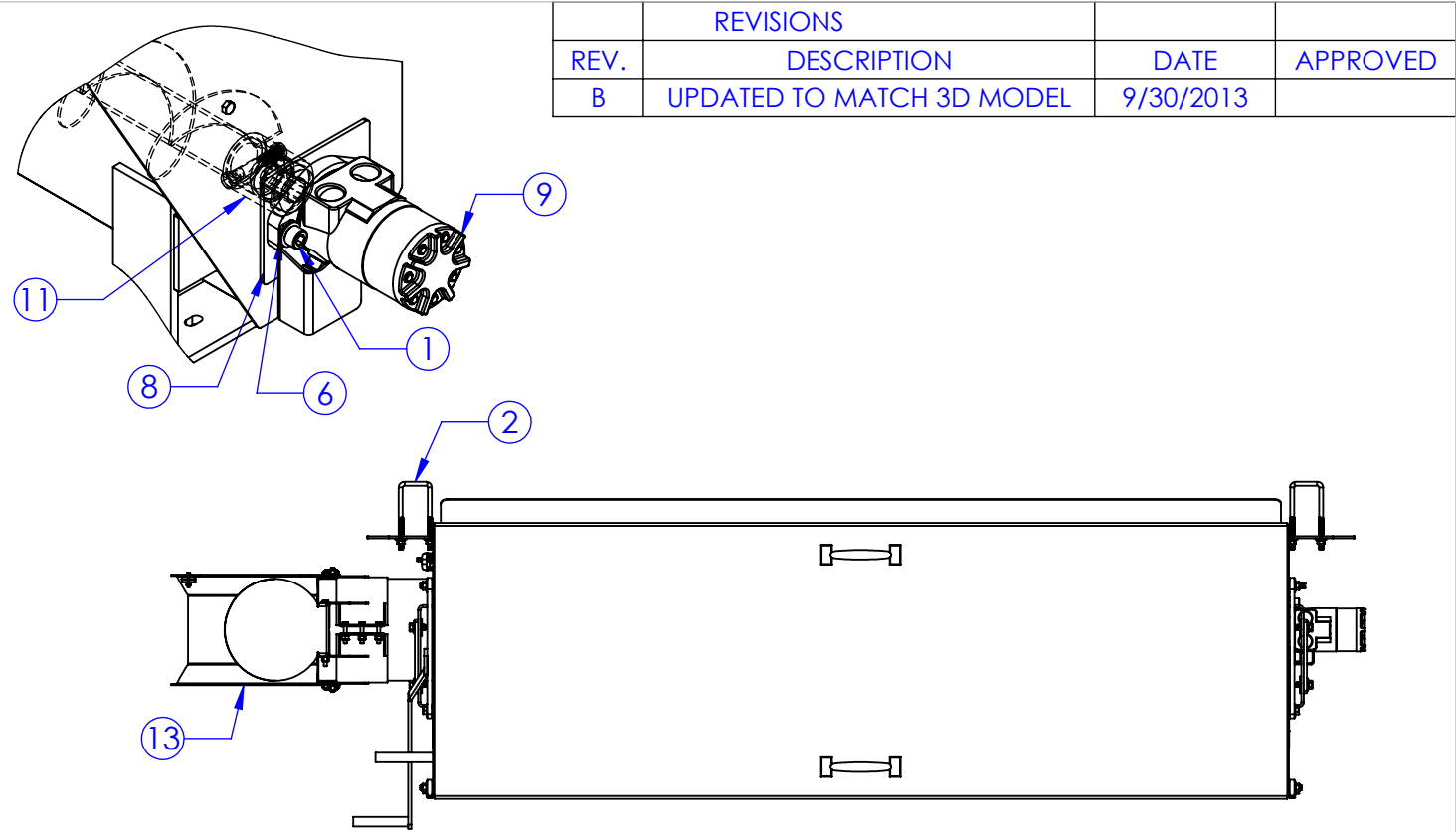
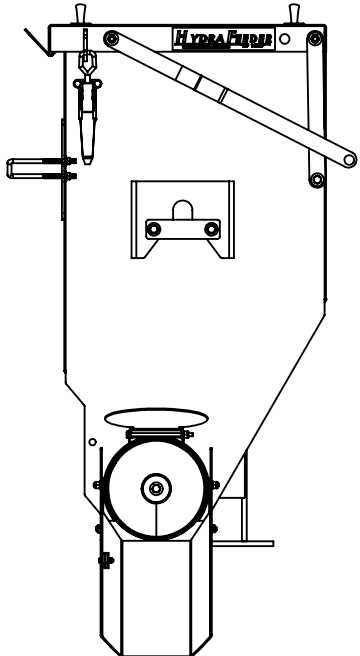


ITEM NO.	PART NUMBER	DESCRIPTION	DRAWING #	Default/ QTY.
1	BO-1/2x1-1/2 SHCS	BOLT SOCKET HEAD 1/2x1-1/2	STOCK	2
2	BO-.3125x2x5 U BOLT	BOLT 5/16x2x5 SQ	95-2217	2
3	BO-3/8 FW	FLAT WASHER 3/8	STOCK	4
4	BO-3/8x1 HCS	BOLT 3/8 x 1	STOCK	4
5	BO-3/8 LW	LOCK WASHER 3/8	STOCK	4
6	BO-1/2 FLAT WASHER	1/2" FLAT WASHER	STOCK	2
7	FP-HF12-49	HYDRA FEEDER SENSOR GUARD	30-2213	1
8	HF-HF-1200	HYDRA-FEEDER 1200	30-1210	1
9	HF-HF 158-3653	EASTON FEEDER MOTOR 9.6 ID	STOCK	1
10	FP-HF12-22A	LIFT BRACKET BAR	30-2223	2
11	HF-HUB SPLINE 1 x 6	HYDRA FEEDER WELDED HUB SPLINED 1" x 6	30-1413	1
12	HF-KHF-A EXT	AUGER EXTENSION HYDRA FEEDER	30-1409	1
13	HF-KHF-DISC8	HYDRA-FEEDER 8" DISCHARGE KIT	30-1408	1



BOM IS FROM HF-PBHF
SEE 30-1804 FOR
MORE DETAILS



PROPRIETARY AND CONFIDENTIAL
THE INFORMATION CONTAINED IN THIS
DRAWING IS THE SOLE PROPERTY OF
<INSERT COMPANY NAME HERE>. ANY
REPRODUCTION IN PART OR AS A WHOLE
WITHOUT THE WRITTEN PERMISSION OF
<INSERT COMPANY NAME HERE> IS
PROHIBITED.

UNLESS OTHERWISE SPECIFIED:
DIMENSIONS ARE IN INCHES
TOLERANCES:
FRACTIONAL $\pm 1/16$
ANGULAR: MACH ± 1 BEND \pm
TWO PLACE DECIMAL ± 0.10
THREE PLACE DECIMAL ± 0.005
MATERIAL
DO NOT SCALE DRAWING

	NAME	DATE	P.O. BOX 248, SABETHA KS. 66534 (785) 284-3674 FAX (785) 284-3931		
DRAWN	HEATH	10/1/2013	<div>TRIPLE C INC.</div>		
PART #					
ASM #					
COMMENTS:			SIZE	DWG. NO.	REV
FINAL ASSEMBLY, HF-1200, HYDRAULIC			B	30-0202 B	B
			SCALE: 1:15	WEIGHT: 411.17	SHEET 1 OF 1